



«УТВЕРЖДАЮ»

Исполнитель: директор завода «Марыкарбамид»

Б.Х.Сувханов

» 08. 2022 г.

ТЕХНИЧЕСКОЕ ЗАДАНИЕ

На закупку реакционных труб и необходимых комплектующих материалов к реакционным трубам печи первичного реформинга по лоту №2 производимых Испанской компанией "Schmidf Clemons" используемых для соблюдения норм в технологического режима цеха аммиака на заводе "Марыкарбамид" ГК Туркменхимия.

Наименование	Количество (штук)	Наименование детали	Тип материал	Обозначение по чертежу	Нормы стандарта	Колич. (штук)
<i>по техническому чертежу СА-997-1</i>						
Реакционные трубы	208	R.F.BLIND FLANGE(TOL.ACC.ASME B16.5)		RF4-1	ASTMA105	208
		FLAT GARLOCK GASKET Ø156/100x2THK	FOR HIDROSTATI C TEST	RF4-2	BLU GARD 3000 OR EQUAL	208
		SPIRAL WOUND GASKET TYPE 4DF5.ACC.TO K-PLANT SPEC P18-ID-60WO		RF4-3	18Cr8Ni+GR APHITE	208
		INSULATION CONTAINER 75 O.Dx3THK		RF4-4	ASTMA 167 A240 TP304	208
		INSULATION CONTAINERPLATE 3THK		RF4-5	ASTMA 167 A240 TP304	208
		CERAMIK FIBER BLANKET	TEMPERATUR E CLASS 1260C□	RF4-6		40 кг
		NUT ø12 UNC CI 2B		RF4-7	ASTMA 194 Gr2H	4992
		STUD BOLTS ø12"x110Lg UNC CI 2A		RF4-8	ASTMA 193 GrB7	2496
		R.F.W.N. FLANGE(TOL.ACC.ASME B16.5)		RF4	ASTMA105	208
		STATIC CAST GRID PLATE	1.4859	RF5	ASTMA351 Gr CT15C	208
		CENTRICAST CATALYST REDUCER	CENTRALLO Y G4859	RF11	ASTMA351 Gr CT15C	208
		TOP REDUCER 5" XXS x3 1/2" SCH 80(SEAMLESS)		RF16	ASTMA403 Gr WP 304	208
		CENTRICAST TUBE I.D110x12,1MSWx12077Lg	CENTRALLOY G4352 MCRO	RP1	HP. MCRO	208
		TOP PIPE 3 1/2" NPS SCH 80 S (SEAMLESS)		RP5	ASTMA 312 TP304H	208
		INLET CONNECTION 1 1/2" NPS SCHxXS(SEAMLESS)		RP7	ASTMA 312 TP304H	208
		OUTLET TUBE 1 1/2" NPS SCH XXS SPC. MB 13-1M-60WO	ALLOY 800HT	RP9	ASTMA/ASM E B407 UNS. NO 8811	208

		<i>по техническому чертежу CA-1000-1</i>				
Выходной коллектор (Outlet manifold)		THERMOWELL PIPE 1/2"	ASTM/ASME SB407 UNS NO8811	RP13	ALLOY 800HT	8
		DRAIN PIPE 1" NPS XXS (SPEC MB13-1M-60W0)	ASTM/ASME SB 407 UNS NO8811	RP12-2	ALLOY 800 HT	4
		DRAIN PIPE 1" NPS XXS (SPEC. MB13-1M-60W0)	ASTM/ASME SB 407 UNS NO 8811	RP12-1	ALLOY 800 HT	4
		PIPE SLEEVE 4" NPS SCH XXS (SEAMLESS)	-	RP11-2	ASTM A 312 Tp 310 S	4
		PIPE SLEEVE 4" NPS SCH XXS (SEAMLESS)	-	RP11-1	ASTM A 312 Tp 310 S	8
		CENTRICAST TUBE 139.7 I.DX 19.1 MSW X 3361 Lg	ASTM A 351 Gr CT15C	RP4	CENTRALLO Y G 4859	8
		CENTRICAST TUBE 139.7 I.DX 19.1 MSW X 3354 Lg	ASTM A 351 Gr CT15C	RP3	CENTRALLO Y G 4859	8
		STUDBOLTS \varnothing 5/8" x 100 Lg UNC OI 2A	ASTMA 193 Gr B 7	RF17-5		16 2#a
		NUT \varnothing 5/8" UNC OI.2B	ASTMA 194 Gr 2 H	RF17-4		32 4#a
		FLAT GARLOCK GASKET \varnothing 73,2 / 31,8 x 2THK	FORHYDROS TATIC TEST	RF17-3	BLUE GARD 3000 OR EQUAL	4 2#a 1#b
		SPIRAL WOUND GASKET TYPE 4DF5, ACC TO M.W.K SPEC. P18-ID-60W0	-	RF17-2	18 Or + 8N + GRAPHITE	4 2#a 1#b
		BLIND FLANGE 1" 600 # RFWN (ACC TO ASME B 16,5)	-	RF17-1	ASTMA 182 Gr F11	4
		FLANGE 1" 600#RFWN (ACC TO ASME B 16,5)	-	RF17	ASTMA 182 Gr F11	4
		CENTRICAST MANIFOLD END CAP	ASTM/A 351 Gr CT15C	RF15	CENTRALLO Y G 4859	8
		THERMOWELL ROD (SPEC. MB13-1M-60W0)	ASTM/ASME SB 408 UNS NO8811	RF10	ALLOY 800 HT	8
		CAST RISER TEE	ASTM/A 351 Gr Ct15c	RF2		4
	CATALYST TUBE BRANCH CONNECTION (SPEC. B13-1M)	ASTM/ASME SB 408 UNS NO8811	RF1	ALLOY 800HT	208	
		<i>по техническому чертежу CA-999-1</i>				
Выходной коллектор (RISER TUBE)		CENTRICAST RISER TUBE I.D 140 x 15/25.6 MSW x 12565 Lg	HP MCRO	RP2	CENTRALLO Y G 4852 MCRO	4 1#c
		CENTRICAST RISER TUBE TOP I.D 140 x 25,6 MSW x 254 Lg	ASTMA 351 Gr CT15-C	RF9	CENTRALLO Y G 4859	4 1#c
		CERAMIC FIBER BLANKET 25mm. THK	TEMPERATURE CLASS 1260°C	MK-D	125 Kg/m ³ DENSITY	(*)
		RISER CAN PLATE		MK-C	INCONEL 601	4

		RISER CAN PLATE		МК-В	INCONEL 601	4
		RISER CAN PLATE	ASTM/ASME SB 409 UNS NO8811	МК-А	ALLOY 800HT	4

Условия оплаты: по факту поставки товара. Все биржевые и банковские расходы в пределах Туркменистана и за его пределами за счет "Поставщика"

Условия поставки: DAP завод «Марыкарбамид», Туркменистан «Инкотермс – 2010».

Транспортировка: Товар упакуется и транспортируется на грузовых автомобилях или железнодорожным вагонам. Товар должен быть произведен не ранее 2022года.

Главный инженер


_____ А.Аманов

Начальник отдела снабжения


_____ С.Аннагулыев

Начальник цеха аммиака

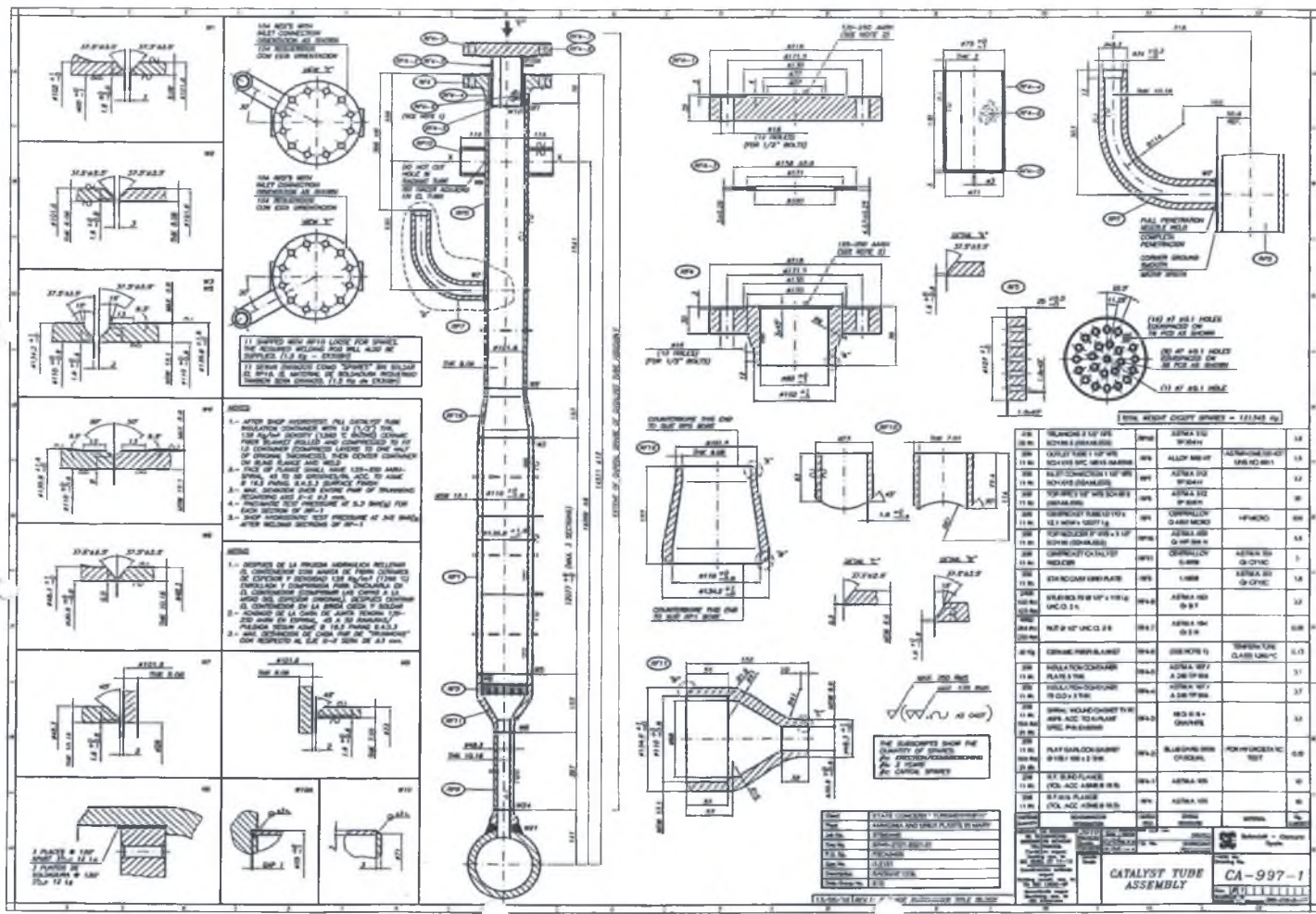

_____ Б.Агаджанов

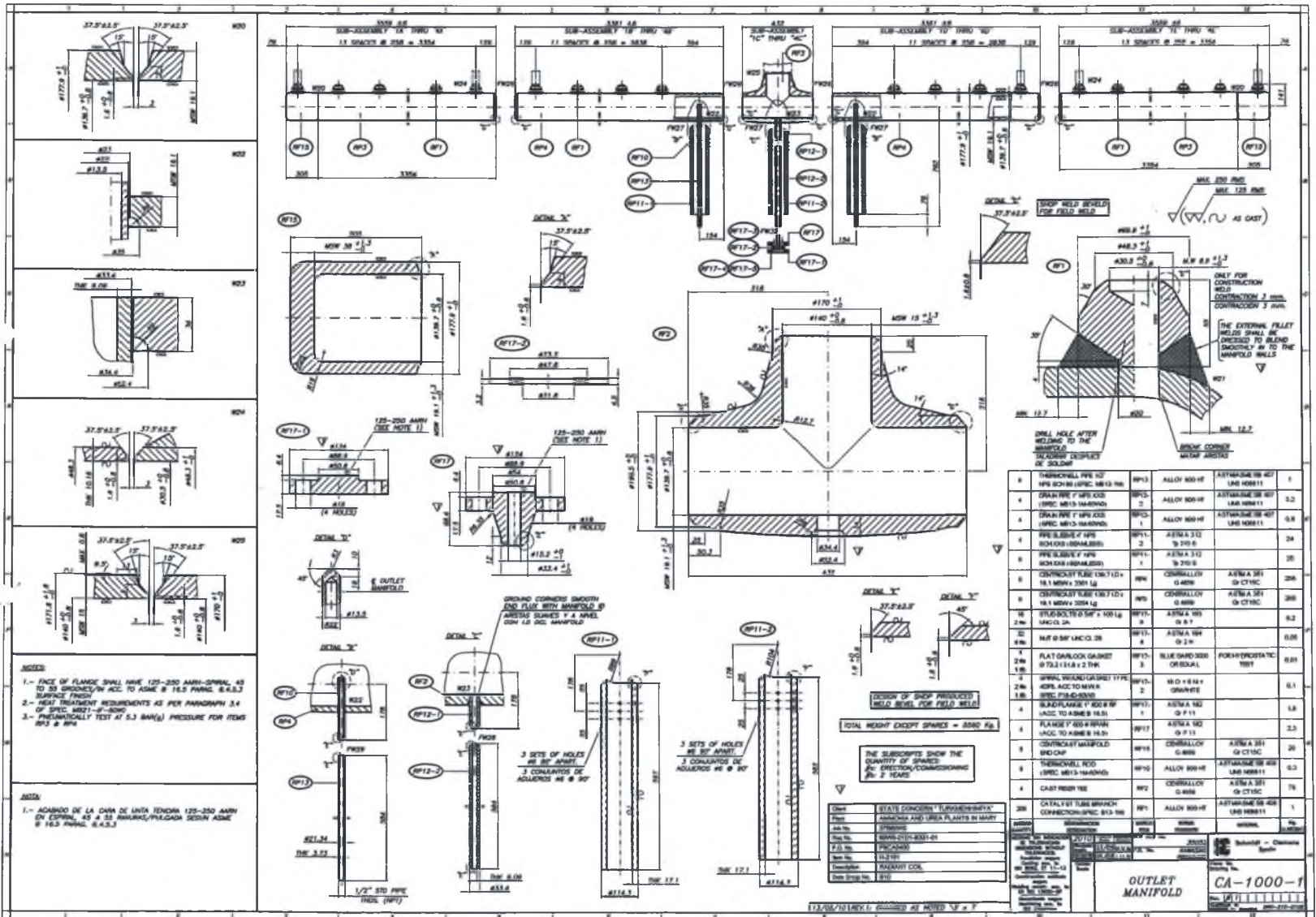
Главный механик


_____ Б.Мурадов

Начальник ПТО


_____ Т.Нуриягдыев





- NOTES:**
- 1.- FACE OF FLANGE SHALL HAVE 125-250 AMV-SPRAL AS TO 30 DIMENSIONS ACC. TO ASME § 16.5 PARAG. 8.4.3 SURFACE FINISH
 - 2.- HEAT TREATMENT REQUIREMENTS AS PER PARAGRAPH 3.4 OF SPEC. MS21-HP-0000
 - 3.- HYDRAULIC TEST AT 5.3 BAR(g) PRESSURE FOR ITEMS #1 & #4

- NOTA:**
- 1.- ACABADO DE LA CARA DE LANTA TENDRA 125-250 AMV (V) ESPRAL AS A 30 DIMENSIONES SEGUN ASME § 16.5 PARAG. 8.4.3

DESIGN OF SHOP PRODUCED WELD BEVEL FOR FIELD WELD

TOTAL WEIGHT EXCEPT SPACES = 8000 LB.

THE SUBSCRIPTS SHOW THE QUANTITY OF SPACES IN EACH DIRECTION/COMBINACION DE 2 VECES

ITEM	DESCRIPTION	QTY	MATERIAL	STANDARD	WEIGHT
1	TERMINAL PIPE 1/2" NPS SCH 40 (SPEC. MS13-16)	NP10	ALLOY 800-H	ASTM A 182-90	1
2	DRAIN PIPE 1" NPS SCH 40 (SPEC. MS13-16)	NP15	ALLOY 800-H	ASTM A 182-90	1.2
3	DRAIN PIPE 1" NPS SCH 40 (SPEC. MS13-16)	NP16	ALLOY 800-H	ASTM A 182-90	0.8
4	PRE-SLAVE 4" NPS SCH 40 (SPECIAL ORDER)	NP11	ASTM A 312	Q 200.8	24
5	PRE-SLAVE 4" NPS SCH 40 (SPECIAL ORDER)	NP12	ASTM A 312	Q 200.8	20
6	CONTRACTOR GASKET 18" x 18" x 3/16" (18" x 18" x 3/16")	NP4	CONTRALLOY	ASTM A 361 Q 1 CTIC	206
7	CONTRACTOR GASKET 18" x 18" x 3/16" (18" x 18" x 3/16")	NP5	CONTRALLOY	ASTM A 361 Q 1 CTIC	206
8	FLANGES 2" NPS SCH 40 (SPEC. MS13-16)	NP17	ASTM A 182	Q 1 F 11	0.2
9	FLANGES 2" NPS SCH 40 (SPEC. MS13-16)	NP18	ASTM A 182	Q 1 F 11	0.06
10	FLAT GASKET 2" NPS SCH 40 (SPEC. MS13-16)	NP19	BLUE DART 2000	FOR HYDROSTATIC TEST	0.01
11	SPRINT WELDING GUN TYPE 4000 AC TO MARK	NP20	MO 18 M + GRANITE		0.1
12	BLANK FLANGE 1" NPS SCH 40 (SPEC. MS13-16)	NP13	ASTM A 182	Q 1 F 11	1.8
13	FLANGE 1" NPS SCH 40 (SPEC. MS13-16)	NP14	ASTM A 182	Q 1 F 11	2.5
14	CONTRACTOR MANIFOLD END CAP	NP18	CONTRALLOY	ASTM A 361 Q 1 CTIC	20
15	TERMINAL ROD (SPEC. MS13-16)	NP9	ALLOY 800-H	ASTM A 182-90	0.8
16	CAP END ROD	NP2	CONTRALLOY	ASTM A 361 Q 1 CTIC	7.5
17	CATALYST TUBE BRANCH CONNECTION (SPEC. MS13-16)	NP1	ALLOY 800-H	ASTM A 182-90	1

OUTLET MANIFOLD

CA-1000-1

STATE CONCERN "TRANSMISIA"

MANUFACTURED AND USED PLANTS IN MARY

DATE: 1984-01-01

SCALE: 1/2" = 1'-0"

DESIGNER: TRANSMISIA

CHECKED: TRANSMISIA

DATE: 1984-01-01

PROJECT NO: 100

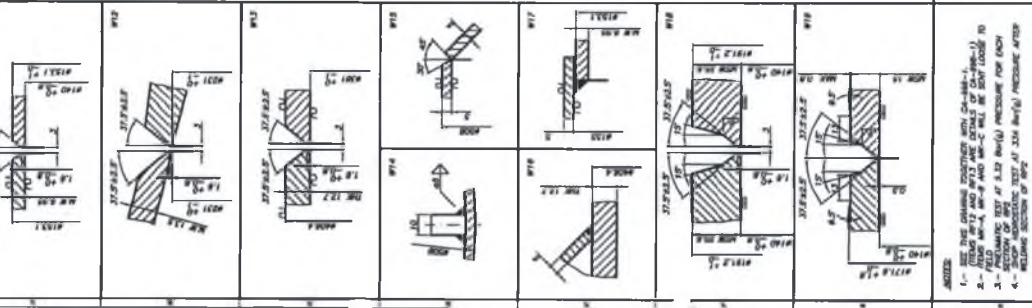
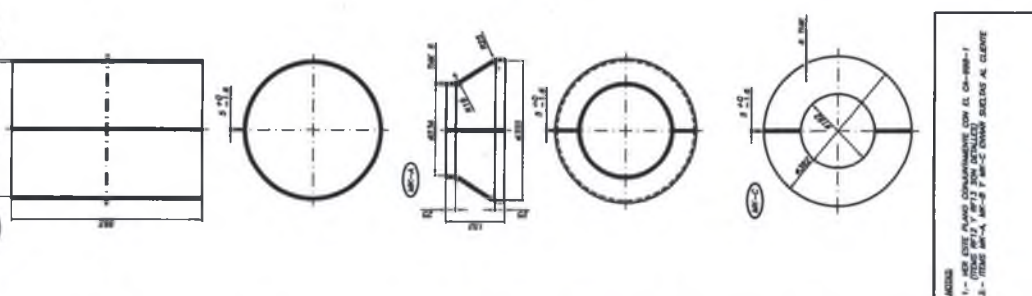
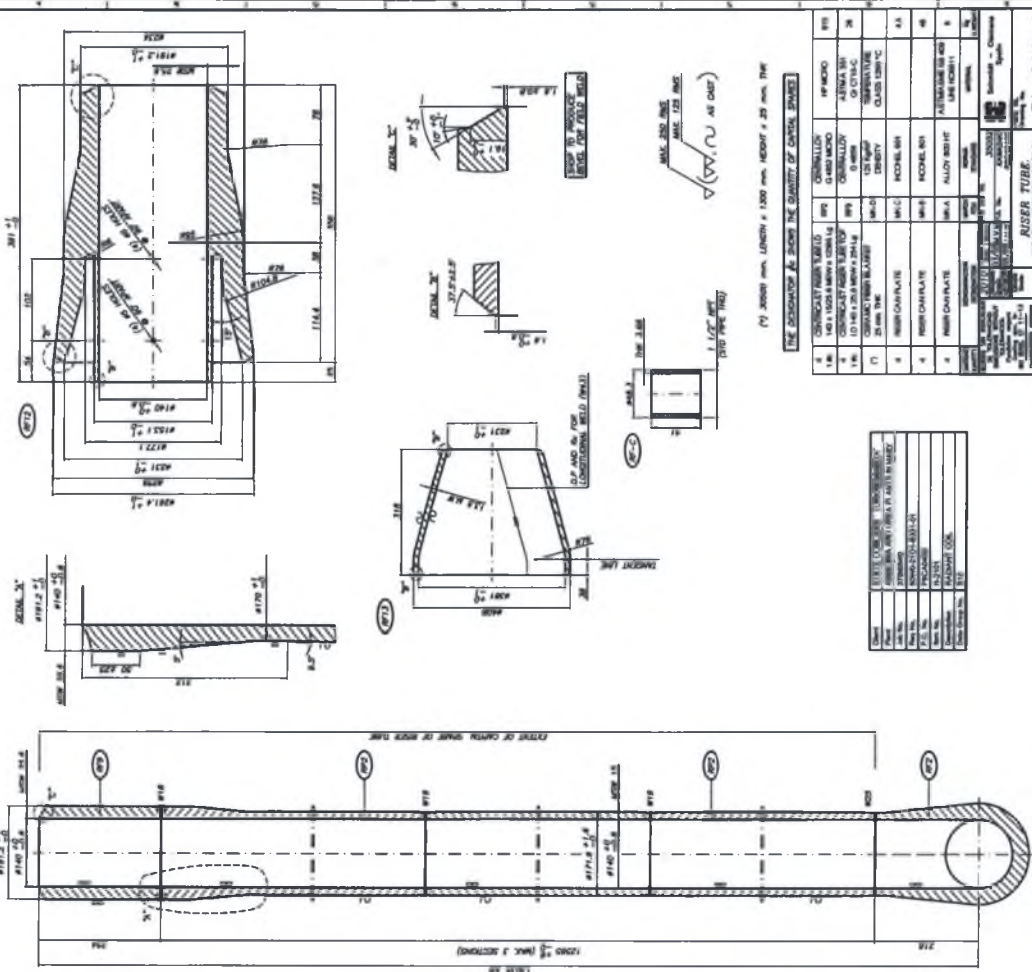
REVISIONS:

NO.	DATE	DESCRIPTION
1	1984-01-01	ISSUED FOR FABRICATION

OUTLET MANIFOLD

CA-1000-1

1/2" = 1'-0" (AS SHOWN)



THE DIMENSIONS & SHOW THE QUANTITY OF CASTING DICES

No.	DESCRIPTION	QTY	UNIT	REMARKS
1	CASTING SAND	1	CU YD	
2	CASTING SAND	1	CU YD	
3	CASTING SAND	1	CU YD	
4	CASTING SAND	1	CU YD	
5	CASTING SAND	1	CU YD	
6	CASTING SAND	1	CU YD	
7	CASTING SAND	1	CU YD	
8	CASTING SAND	1	CU YD	
9	CASTING SAND	1	CU YD	
10	CASTING SAND	1	CU YD	
11	CASTING SAND	1	CU YD	
12	CASTING SAND	1	CU YD	
13	CASTING SAND	1	CU YD	
14	CASTING SAND	1	CU YD	
15	CASTING SAND	1	CU YD	
16	CASTING SAND	1	CU YD	
17	CASTING SAND	1	CU YD	
18	CASTING SAND	1	CU YD	
19	CASTING SAND	1	CU YD	
20	CASTING SAND	1	CU YD	

CA-999-1

DETAILS

UNIT	DESCRIPTION	QTY	UNIT PRICE	TOTAL PRICE
1	CASTING SAND	1		
2	CASTING SAND	1		
3	CASTING SAND	1		
4	CASTING SAND	1		
5	CASTING SAND	1		
6	CASTING SAND	1		
7	CASTING SAND	1		
8	CASTING SAND	1		
9	CASTING SAND	1		
10	CASTING SAND	1		
11	CASTING SAND	1		
12	CASTING SAND	1		
13	CASTING SAND	1		
14	CASTING SAND	1		
15	CASTING SAND	1		
16	CASTING SAND	1		
17	CASTING SAND	1		
18	CASTING SAND	1		
19	CASTING SAND	1		
20	CASTING SAND	1		

CA-999-1

DETAILS

1. SEE THE DRAWING SPECIFICATIONS FOR CA-999-1
 2. THE DRAWING SPECIFICATIONS FOR CA-999-1
 3. THE DRAWING SPECIFICATIONS FOR CA-999-1
 4. THE DRAWING SPECIFICATIONS FOR CA-999-1

1. SEE THE DRAWING SPECIFICATIONS FOR CA-999-1
 2. THE DRAWING SPECIFICATIONS FOR CA-999-1
 3. THE DRAWING SPECIFICATIONS FOR CA-999-1
 4. THE DRAWING SPECIFICATIONS FOR CA-999-1

1. SEE THE DRAWING SPECIFICATIONS FOR CA-999-1
 2. THE DRAWING SPECIFICATIONS FOR CA-999-1
 3. THE DRAWING SPECIFICATIONS FOR CA-999-1
 4. THE DRAWING SPECIFICATIONS FOR CA-999-1